

# MONTHLY MEMBERSHIP PROGRESS REPORT

LOCATION INDIA

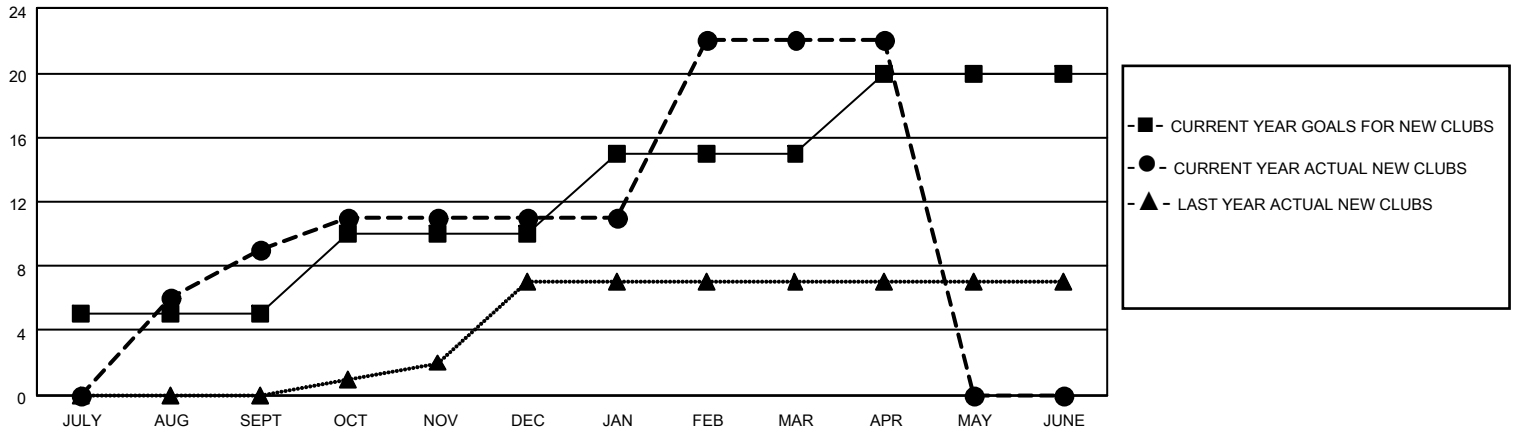
District 3233G1

Results as of: 4/30/2022

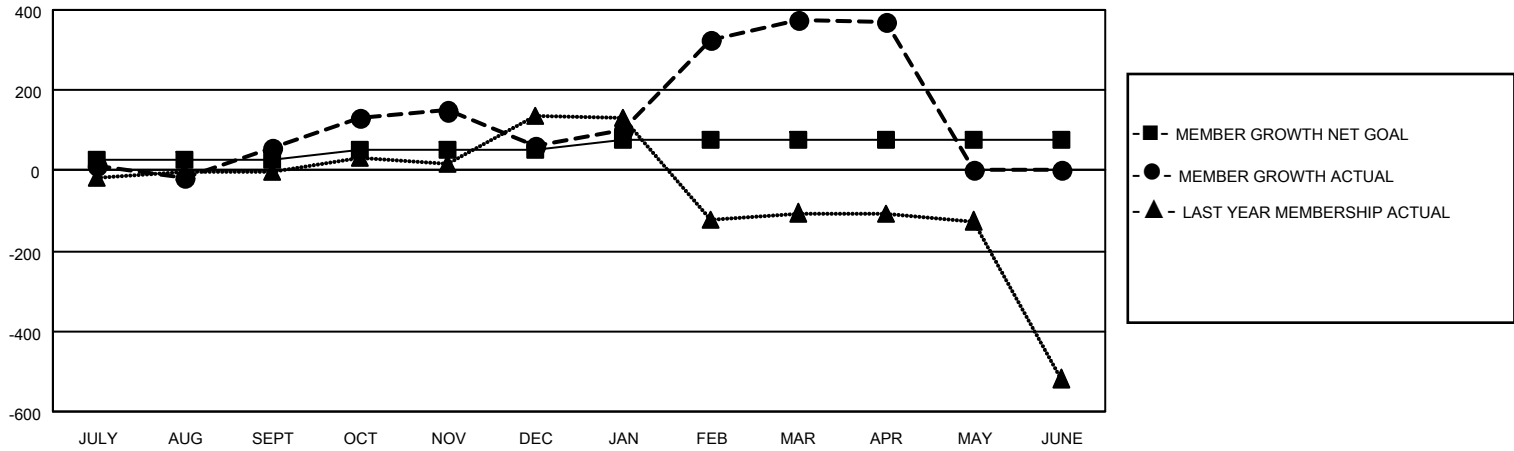
Clubs			
RESULTS FOR 2021-2022			
QUARTER	NEW CLUB GOAL	NEW CLUBS	DROPPED CLUBS
JULY/AUG/SEPT	5	9	13
OCT/NOV/DEC	5	2	9
JAN/FEB/MAR	5	11	3
APR/MAY/JUNE	5	0	1

Members			
RESULTS FOR 2021-2022			
QUARTER	MEMBER GROWTH NET GOAL	MEMBER GROWTH ACTUAL	DROPPED MEMBERS ACTUAL (including transfers)
JULY/AUG/SEPT	25	312	230
OCT/NOV/DEC	25	168	157
JAN/FEB/MAR	25	379	57
APR/MAY/JUNE	0	24	25

**GOALS AND ACTUAL NEW CLUBS CUMULATIVE**



**GOALS AND ACTUAL MEMBERS CUMULATIVE**



**DROPPED CLUBS: 25**

**83 CLUBS OF 226 ADDED 1 OR MORE NEW MEMBERS**

**GENDER DISTRIBUTION**

MALE	2,244 (59.29%)
FEMALE	1,541 (40.71%)
NON BINARY	0 (0.00%)
PREFER NOT TO ANSWER	0 (0.00%)

**DROPPED MEMBERS**

[CLICK HERE FOR CUMULATIVE MEMBERSHIP DATA](#)

DECEASED	4
CLUB CANCELLED	308
OTHER	157
<b>TOTAL</b>	<b>469</b>

TOTAL FAMILY UNIT MEMBERS 1,705

FAMILY MEMBERS PAYING HALF DUES 1,009